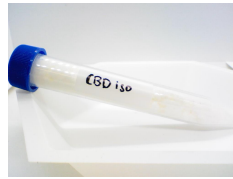




Certificate of Analysis



CBD ISO

Matrix: Derivative

Accession Number: 041221UD0001

Harvest/Lot ID:

Seed to Sale: *

Batch Date: 04/12/21

Batch #:

Sample Size Received: 1 units

Retail Product Size:

Ordered: 04/12/21

Completed: 04/16/21

Expires:

Apr 16, 2021 | Brushy Bee CBD



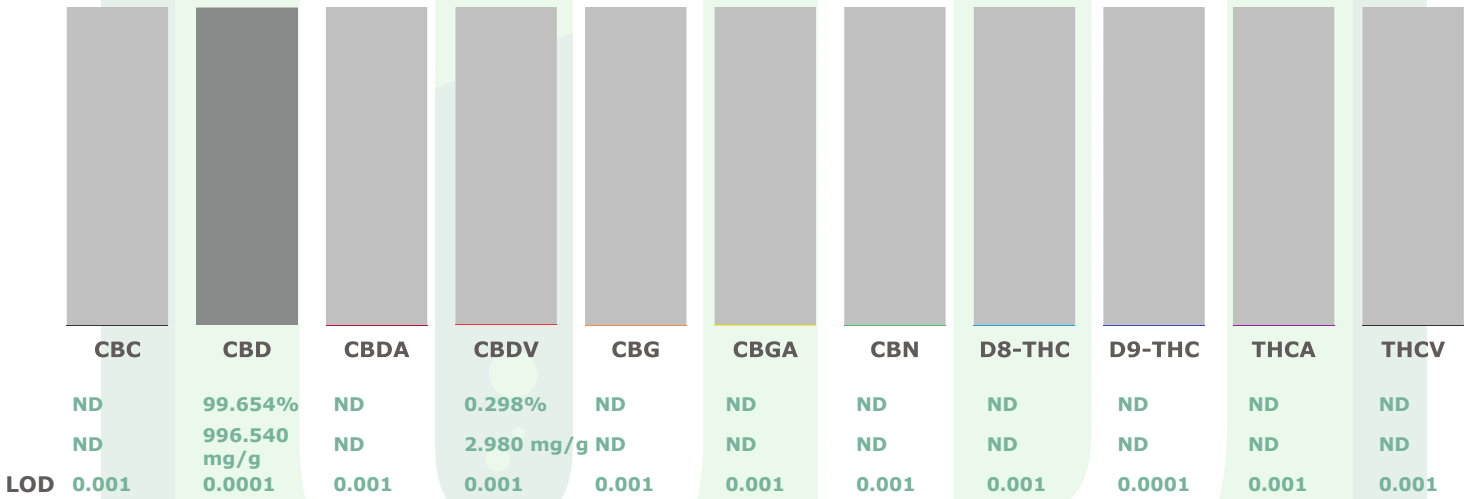
Sampling Method: SOP Client Method

Moravian Falls, NC,
3369211010

BRUSHY BEE CBD

CANNABINOID RESULTS

Total THC 0.000%	Total CBD 99.654%	Total Cannabnoids 99.952%
-----------------------------------	------------------------------------	--



Full spectrum cannabinoid analysis utilizing High Performance Liquid Chromatography with UV detection (HPLC-PDA). (Method: SOP.KY.02.005) sample prep and Shimadzu High Sensitivity Method SOP.KY.02.012 for analysis. LOQ for all cannabinoids is 1 mg/L. % = %w/w = Percent (Weight of Analyte/Weight Product) Total Cannabinoids result reflects the absolute sum of all cannabinoids detected. **Total Potential THC/CBD is calculated using the following formulas to take into account the loss of a carboxyl group during decarboxylation Total THC = THC + (THCa*0.877) Total CBD = CBD + (CBDA*0.877) null

This report shall not be reproduced, unless in its entirety, without written approval from Universal Diagnostics. This report is an Universal Diagnostics certification. The results relate only to the material or product analyzed. Test results are confidential unless explicitly waived otherwise. Void after 1 year from test end date. Cannabinoid content of batch material may vary depending on sampling error. IC=In-control QC parameter, NC=Non-controlled QC parameter, ND=Not Detected, NA=Not Analyzed, ppm=Parts Per Million, ppb=Parts Per Billion. Limit of Detection (LoD) and Limit Of Quantitation (LoQ) are terms used to describe the smallest concentration that can be reliably measured by an analytical procedure. RPD=Reproducibility of two measurements. Action Levels are State determined thresholds for human safety for consumption and/or inhalation. The result >99% are variable based on uncertainty of measurement (UM) for the analyte. The UM error is available from the lab upon request. The "Decision Rule" for the pass/fail does not include the UM. The limits are based on F.S. Rule 64-4.310.

David Greene
Lab Director

State License # 19-05-02P
ISO Accreditation # PJLA
ISO17025

Signature

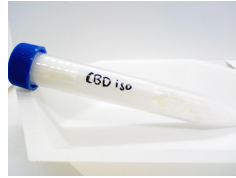
04/16/21

Signed On



Certificate of Analysis

Brushy Bee CBD



BRUSHY BEE CBD

Moravian Falls, NC,
Telephone: 3369211010
Email: Natosha@brushybeecbd.com

CBD ISO
Matrix: Derivative
Accession Number: 041221UD0001
Harvest/Lot ID:
Seed to Sale: *
Batch Date: 04/12/21
Batch #:
Sample Size Received: 1 units
Retail Product Size:
Ordered: 04/12/21
Completed: 04/16/21
Expires:
Sampling Method: SOP Client Method

Pesticides						PASSED					
Pesticides	LLOQ	Result	Units	Action Level	Pass / Fail	Pesticides	LLOQ	Result	Units	Action Level	Pass / Fail
CYPERMETHRIN	0.02	ND	ppm	1	PASS	THIAMETHOXAM	0.01	ND	ppm	0.2	PASS
NALED	0.01	ND	ppm	0.5	PASS	SPIROXAMINE	0.01	ND	ppm	0.2	PASS
BIFENTHRIN	0.01	ND	ppm	0.2	PASS	ABAMECTIN B1A	0.02	ND	ppm	0.5	PASS
SPINOSAD (SPINOSYN D)	0.01	ND	ppm	0.2	PASS	DAMINOZIDE	0.02	ND	ppm	1	PASS
FLONICAMID	0.01	ND	ppm	1	PASS	DIMETHOATE	0.01	ND	ppm	0.2	PASS
PYRETHRIN I	0.01	ND	ppm	1	PASS	PIPERONYL BUTOXIDE	0.01	ND	ppm	2	PASS
ETOFENPROX	0.01	ND	ppm	0.4	PASS	PERMETHRINS (sum)	0.05	ND	ppm	1	PASS
FENHEXAMID	0.005	ND	ppm	0.1	PASS	ETOXAZOLE	0.01	ND	ppm	0.2	PASS
- trans-permethrin	0.0118	ND	ppm	0.4	PASS	SPINOSAD (SPINOSYN A)	0.01	ND	ppm	0.2	PASS
ACEPHATE	0.01	ND	ppm	0.4	PASS	CLOFENTEZINE	0.01	ND	ppm	0.2	PASS
MYCLOBUTANIL	0.01	ND	ppm	0.2	PASS	PRALLETHRIN	0.05	ND	ppm	0.2	PASS
DICHLORVOS	0.05	ND	ppm	0.1	PASS	OXAMYL	0.01	ND	ppm	1	PASS
THIACLOPRID	0.01	ND	ppm	0.2	PASS	DIAZANON	0.01	ND	ppm	0.2	PASS
CARBOFURAN	0.01	ND	ppm	0.2	PASS	CHLORANTRANILIPROLE	0.01	ND	ppm	0.2	PASS
BOSCALID	0.01	ND	ppm	0.4	PASS	ACEQUINOCYL	0.05	ND	ppm	2	PASS
SPINETORAM	0.01	ND	ppm	0.5	PASS	ALDICARB	0.02	ND	ppm	0.4	PASS
MEVINPHOS	0.01	ND	ppm	0.1	PASS	KRESOXIM-METHYL	0.01	ND	ppm	0.4	PASS
METALAXYL	0.01	ND	ppm	0.2	PASS	- cis-permethrin	0.0041	ND	ppm	0.4	PASS
METHOMYL	0.01	ND	ppm	0.4	PASS	ETHOPROPHOS	0.01	ND	ppm	0.2	PASS
IMAZALIL	0.01	ND	ppm	0.2	PASS	DIMETHOMORPH	0.005	ND	ppm	0.1	PASS
PROPOXUR	0.01	ND	ppm	0.2	PASS	FENOXYCARB	0.01	ND	ppm	0.2	PASS
FENPYROXIMATE	0.01	ND	ppm	0.4	PASS	BIFENAZATE	0.01	ND	ppm	0.2	PASS
AZOXYSTROBIN	0.01	ND	ppm	0.2	PASS	SPIROMESIFEN	0.01	ND	ppm	0.2	PASS
Trifloxystrobin	0.01	ND	ppm	0.2	PASS	METHIOCARB	0.01	ND	ppm	0.2	PASS
ACETAMIPRID	0.01	ND	ppm	0.2	PASS	PYRIDABEN	0.01	ND	ppm	0.2	PASS
TEBUCONAZOLE	0.01	ND	ppm	0.4	PASS	HEXYTHIAZOX	0.01	ND	ppm	1	PASS
IMIDACLOPRID	0.01	ND	ppm	0.4	PASS	PHOSMET	0.01	ND	ppm	0.2	PASS
COUMAPHOS	0.01	ND	ppm	0.2	PASS	PROPICONAZOLE	0.01	ND	ppm	0.4	PASS
FIPRONIL	0.02	ND	ppm	0.4	PASS	FLUDIOXONIL	0.01	ND	ppm	0.4	PASS
MALATHION	0.01	ND	ppm	0.2	PASS	PACLOBUTRAZOL	0.01	ND	ppm	0.4	PASS
CARBARYL	0.01	ND	ppm	0.2	PASS	SPIROTETRAMAT	0.02	ND	ppm	0.2	PASS
CHLORPYRIFOS	0.01	ND	ppm	0.2	PASS						

Pesticide screen is performed using LC-MS which can screen down to below single digit ppb concentrations for regulated Pesticides. Currently we analyze for 57 Pesticides. (Method: SOP.T.30.060 Sample Preparation for Pesticides Analysis via LCMSMS and SOP.T40.060 Procedure for Pesticide Quantification Using LCMS). **

Residual Solvents						PASSED					
Solvent	LLOQ	Result	Units	Action Level (PPM)	Pass/Fail						
Hexane	40	ND	ppm	290	PASS						
Propane	400	ND	ppm	5000	PASS						
Methanol	40	ND	ppm	3000	PASS						
O-Xylene	40	ND	ppm	2170	PASS						
Heptane	40	280	ppm	5000	PASS						
Isobutane	200	ND	ppm	5000	PASS						

Heavy Metals						PASSED					
Metal	LLOQ	Result	Unit	Action Level	Pass / Fail						
Arsenic	0.2	ND	ppm	3	PASS						
Cadmium	0.2	ND	ppm	0.3	PASS						
Lead	0.2	ND	ppm	10	PASS						
Mercury	0.2	ND	ppm	3	PASS						

Heavy Metals screening is performed using ICP-MS (Inductively Coupled Plasma - Mass Spectrometer) which can screen down to below single digit ppb concentrations for regulated heavy metals using Method SOP.T.30.052 Sample Preparation for Heavy Metals Analysis via ICP-MS and SOP.T.40.050 Heavy Metals Analysis via ICP-MS. *Action Limits based on Colorado Regulations.

This report shall not be reproduced, unless in its entirety, without written approval from Universal Diagnostics. This report is an Universal Diagnostics certification. The results relate only to the material or product analyzed. Test results are confidential unless explicitly waived otherwise. Void after 1 year from test end date. Cannabinoid content of batch material may vary depending on sampling error. IC-In-control QC parameter, NC=Non-controlled QC parameter, ND=Not Detected, NA=Not Analyzed, ppm=Parts Per Million, ppb=Parts Per Billion. Limit of Detection (LoD) and Limit Of Quantitation (LoQ) are terms used to describe the smallest concentration that can be reliably measured by an analytical procedure. RPD=Reproducibility of two measurements. Action Levels are State determined thresholds for human safety for consumption and/or inhalation. The result >99% are variable based on uncertainty of measurement (UM) for the analyte. The UM error is available from the lab upon request. The "Decision Rule" for the pass/fail does not include the UM. The limits are based on F.S. Rule 64-4.310.

David Greene
Lab Director

State License # 19-05-02P
ISO Accreditation # PJLA
ISO17025

Signature

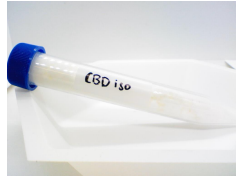
04/16/21

Signed On



Certificate of Analysis

Brushy Bee CBD



BRUSHY BEE CBD

Moravian Falls, NC,
Telephone: 3369211010
Email: Natosha@brushybeecbd.com

CBD ISO

Matrix: Derivative

Accession Number: 041221UD0001

Harvest/Lot ID:

Seed to Sale: *

Batch Date: 04/12/21

Batch #:

Sample Size Received: 1 units

Retail Product Size:

Ordered: 04/12/21

Completed: 04/16/21

Expires:

Sampling Method: SOP Client Method

Residual Solvents	PASSED				
Solvent	LLOQ	Result	Units	Action Level (PPM)	Pass/Fail
Acetonitrile	60	ND	ppm	410	PASS
Total Xylenes	120	ND	ppm	2170	PASS
Ethanol	80	ND	ppm	5000	PASS
Toluene	40	ND	ppm	890	PASS
Ethyl Ether	40	ND	ppm	5000	PASS
Acetone	60	ND	ppm	5000	PASS
Butane	200	ND	ppm	5000	PASS
M/P-Xylene	80	ND	ppm	2170	PASS
Ethyl Acetate	60	ND	ppm	5000	PASS
2-Propanol	60.0	ND	ppm	5000	PASS
Pentane	60	ND	ppm	5000	PASS



This report shall not be reproduced, unless in its entirety, without written approval from Universal Diagnostics. This report is an Universal Diagnostics certification. The results relate only to the material or product analyzed. Test results are confidential unless explicitly waived otherwise. Void after 1 year from test end date. Cannabinoid content of batch material may vary depending on sampling error. IC=In-control QC parameter, NC=Non-controlled QC parameter, ND=Not Detected, NA=Not Analyzed, ppm=Parts Per Million, ppb=Parts Per Billion. Limit of Detection (LoD) and Limit Of Quantitation (LoQ) are terms used to describe the smallest concentration that can be reliably measured by an analytical procedure. RPD=Reproducibility of two measurements. Action Levels are State determined thresholds for human safety for consumption and/or inhalation. The result >99% are variable based on uncertainty of measurement (UM) for the analyte. The UM error is available from the lab upon request. The "Decision Rule" for the pass/fail does not include the UM. The limits are based on F.S. Rule 64-4.310.

David Greene
Lab Director

State License # 19-05-02P
ISO Accreditation # PJLA
ISO17025

Signature

04/16/21

Signed On